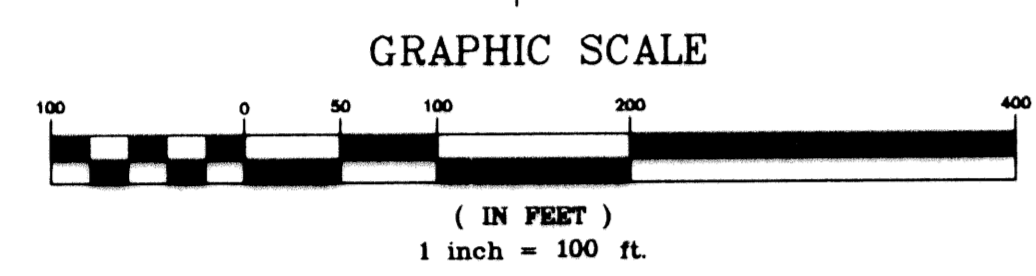
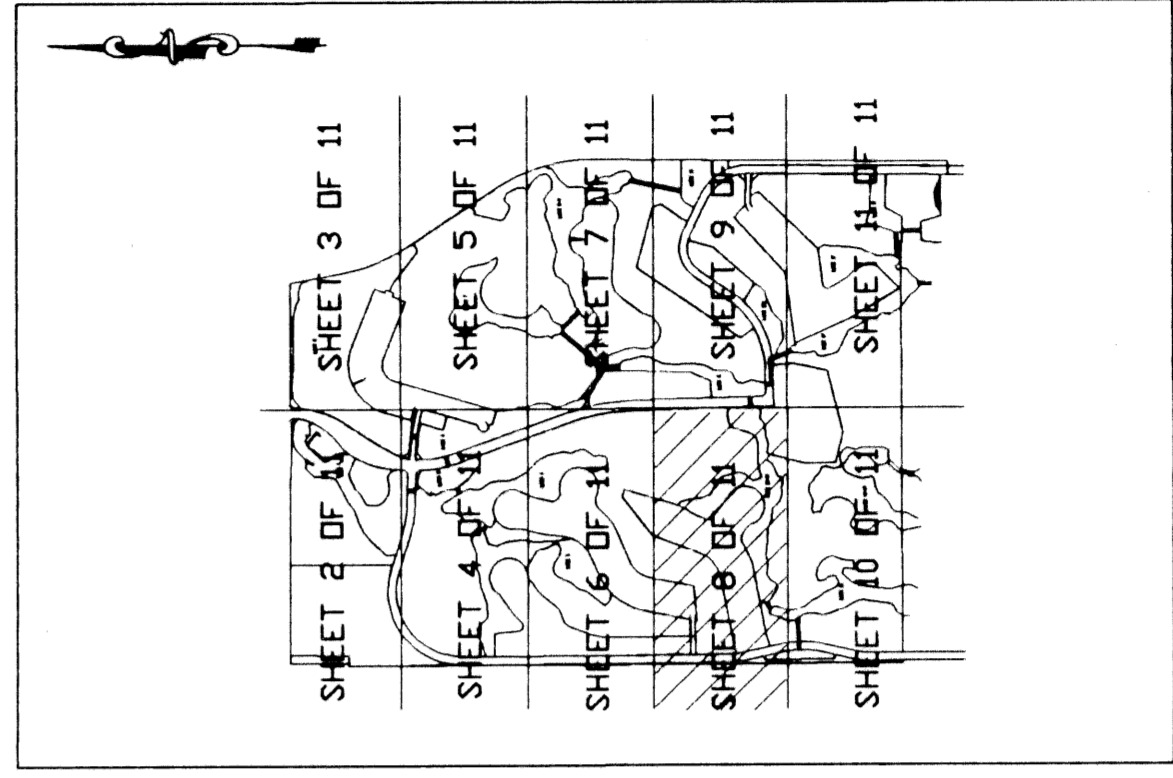


# IBIS GOLF AND COUNTRY CLUB PLAT NO. 14

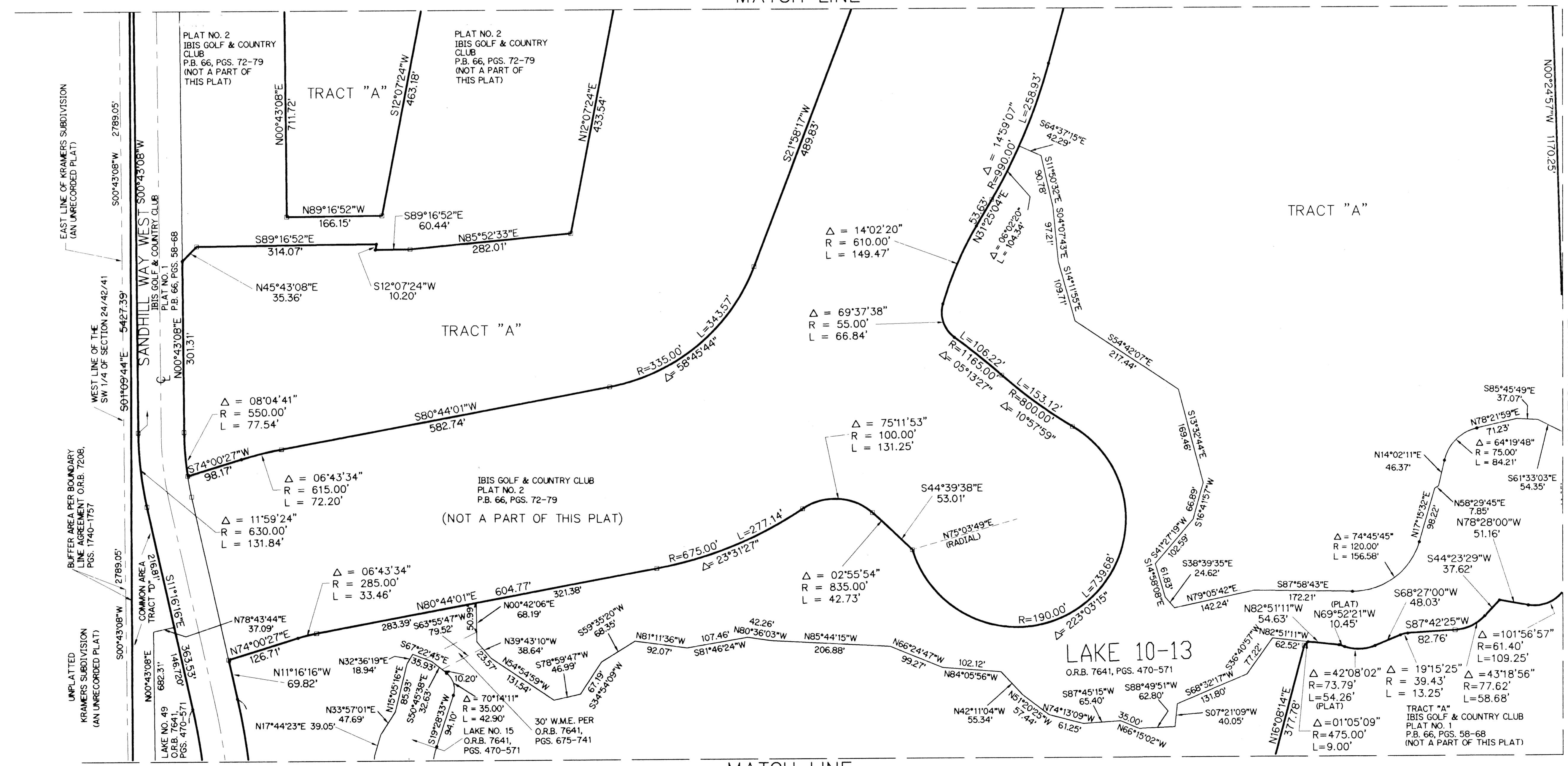
A PLANNED UNIT DEVELOPMENT  
LYING IN SECTIONS 13, 24 AND 25, TOWNSHIP 42 SOUTH, RANGE 41 EAST  
CITY OF WEST PALM BEACH, PALM BEACH COUNTY, FLORIDA

KEY MAP  
(NOT TO SCALE)



- LEGEND:
- O.R.B. - OFFICIAL RECORD BOOK
  - P.B. - PLAT BOOK
  - PGS. - PAGES
  - W.M.E. - WATER MANAGEMENT EASEMENT
  - - PERMANENT REFERENCE MONUMENT FOUND NO. LB 559
  - - PERMANENT REFERENCE MONUMENT SET NO. LS 4382
  - ⊕ - SECTION CORNER
  - ⊕ - ONE-QUARTER SECTION CORNER

(SEE SHEET 6 OF 11)  
MATCH LINE



MATCH LINE  
(SEE SHEET 10 OF 11)

MATCH LINE  
(SEE SHEET 9 OF 11)

SUBDIVISION \* Ibis Golf And Country Club Plat 14  
BOOK 75 FLOOD MAP # -  
PAGE 114 ZONING -  
QUAD # - ZIP CODE -  
SE C/West Palm Beach  
PUD NAME 13-24-25/42/41



**LINDAHL, BROWNING, FERRARI, & HELLSTROM, INC.**  
CONSULTING ENGINEERS, PLANNERS & SURVEYORS  
210 JUPITER LAKES BLVD. SUITE 200 FT. PIERCE, FL. 34950  
BLDG 3000 SUITE 104 SUITE 200 WEST PALM BEACH, FL 33409  
JUPITER, FL 33468 STUART, FL 34996 FT. PIERCE, FL 34950 WEST PALM BEACH, FL 33409  
407-746-9248 407-286-3883 407-461-2450 407-684-3275